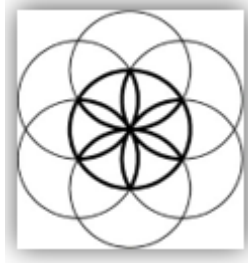


Pulsed Frequency™



PlasmaBasic Software
Download, Installation and
User Guide

Contents

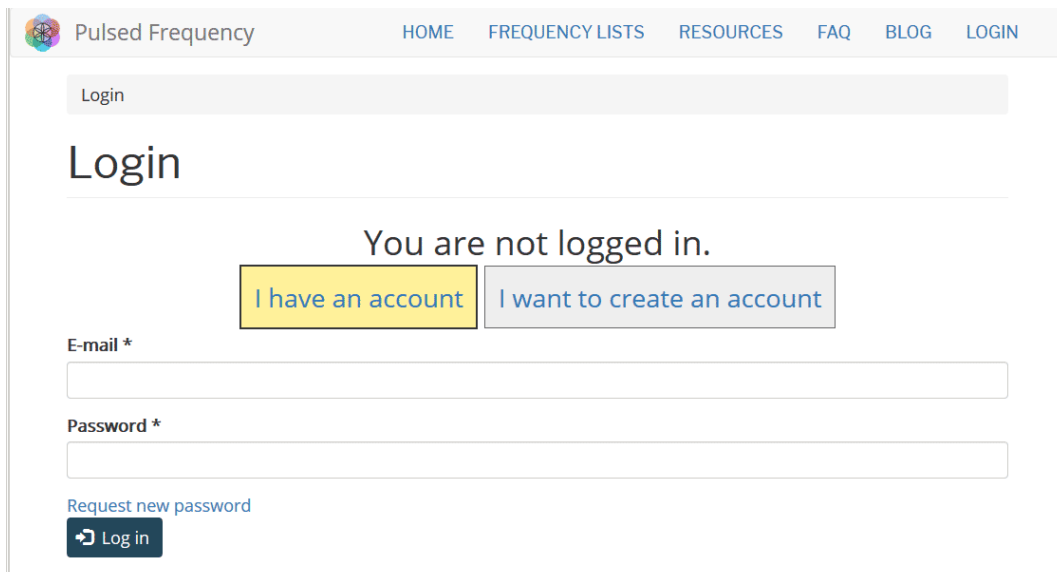
Account Registration.....	3
Create an Account.....	4
Download the Software	6
Chrome.....	7
Edge.....	8
Firefox	10
Install the Software.....	12
Connect PLAZOMICS to Your Computer	17
Load a Program into the PLAZOMICS.....	21
Check for Software Updates	22
Troubleshooting.....	24
PLAZOMICS Manual Detection	26

Account Registration

To download the Pulsed Frequency software, please go to www.pulsedfrequency.com.



Click where the arrow is pointing. You will be taken to a Login screen.



If you already have an account, click **I have an account**. Enter your email address and password and then click **Log in**.

Create an Account

If you do not have an account, select **I want to create an account**.

[HOME](#) [FREQUENCY](#) [SOFTWARE](#) [TESTIMONIALS](#) [FREQUENCY LISTS](#) [RESOURCES](#) [WEBINARS](#)
 LOGIN

Login

You are not logged in.

[I have an account](#) [I want to create an account](#)

Please check your spam folder for the confirmation email.

E-mail *

Create new account

copyright © 2016-2018 Pulsed Frequency, all rights reserved | [Contact Us](#)

Enter your email address, then click **Create new account**. Further instructions will then be sent to your email address. The confirmation email will look something like this.



Click on the link in the email and you will be taken back to the website to reset your password.

You have just used your one-time login link. It is no longer necessary to use this link to log in. Please change your password. ×

[View](#) [Edit](#) [Orders](#)

E-mail address *

Password

Confirm password

Email updates
 Subscribe

Locale settings
Time zone

Enter a New password in both fields.

You have just used your one-time login link. It is no longer necessary to use this link to log in. Please change your password. ×

[View](#) [Edit](#) [Orders](#)

E-mail address *

Password
 ✓

Confirm password
 ✓

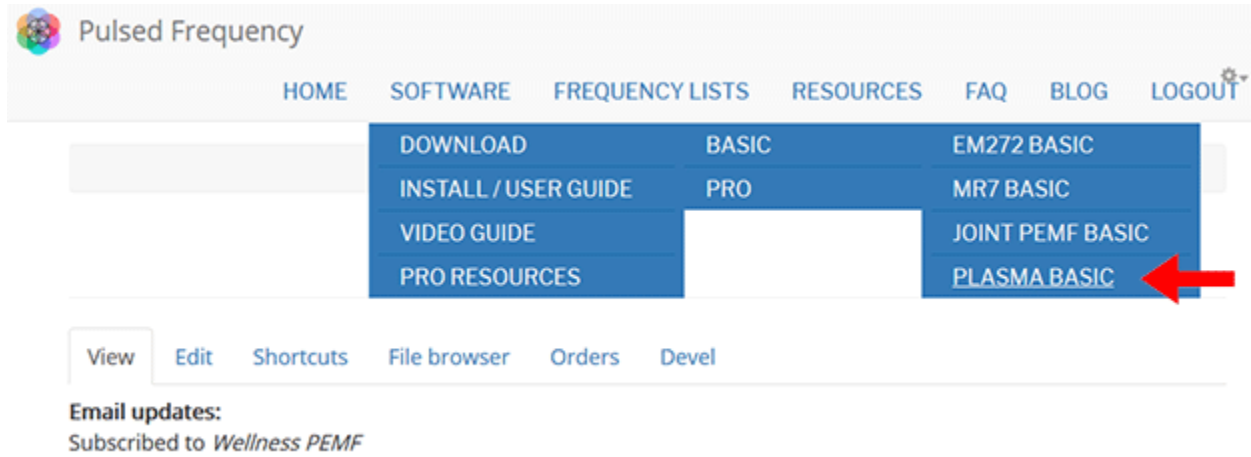
Email updates
 Subscribe

Locale settings
Time zone

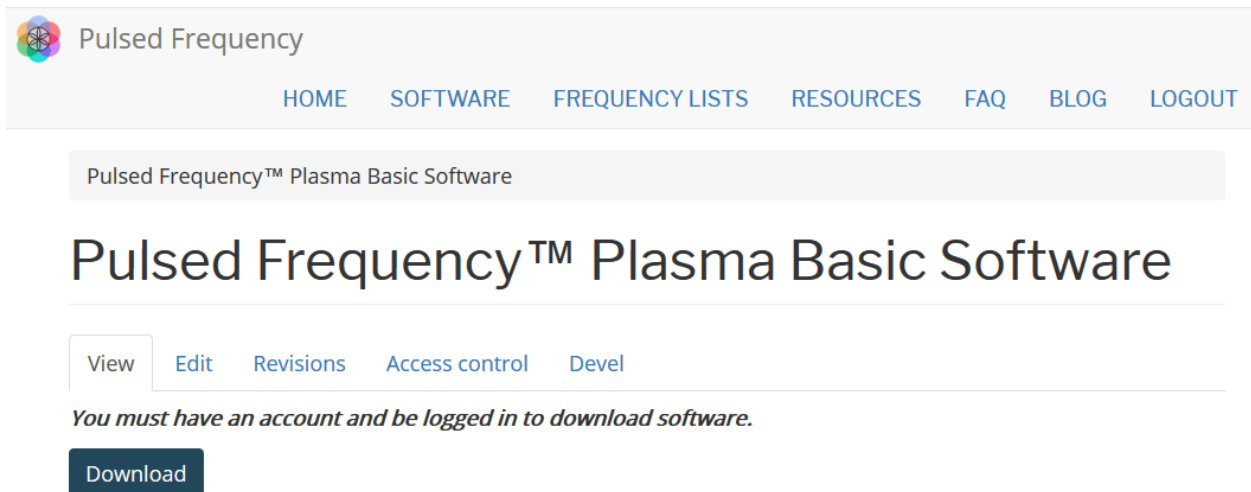
After you have changed your password, click the **Save** button. You will be told that the changes have been saved.

Download the Software

If you aren't already logged in, log into your account, then click the Software menu item.



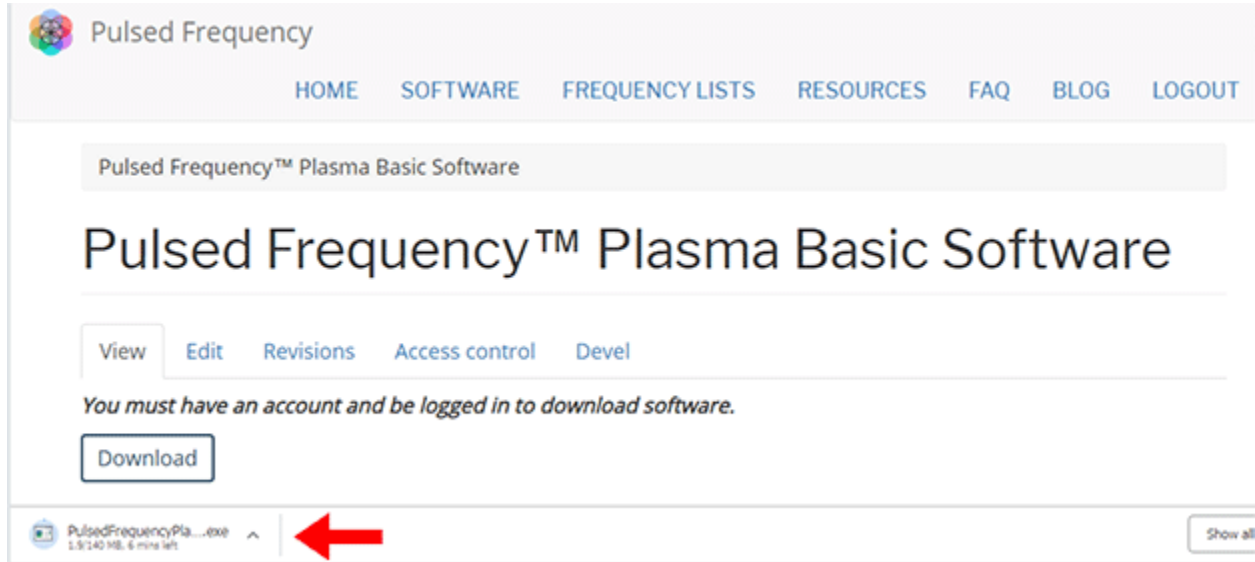
Point to **Download**, point to **Basic**, then click **PLASMA BASIC**. When you do this, you will be taken to the following page.



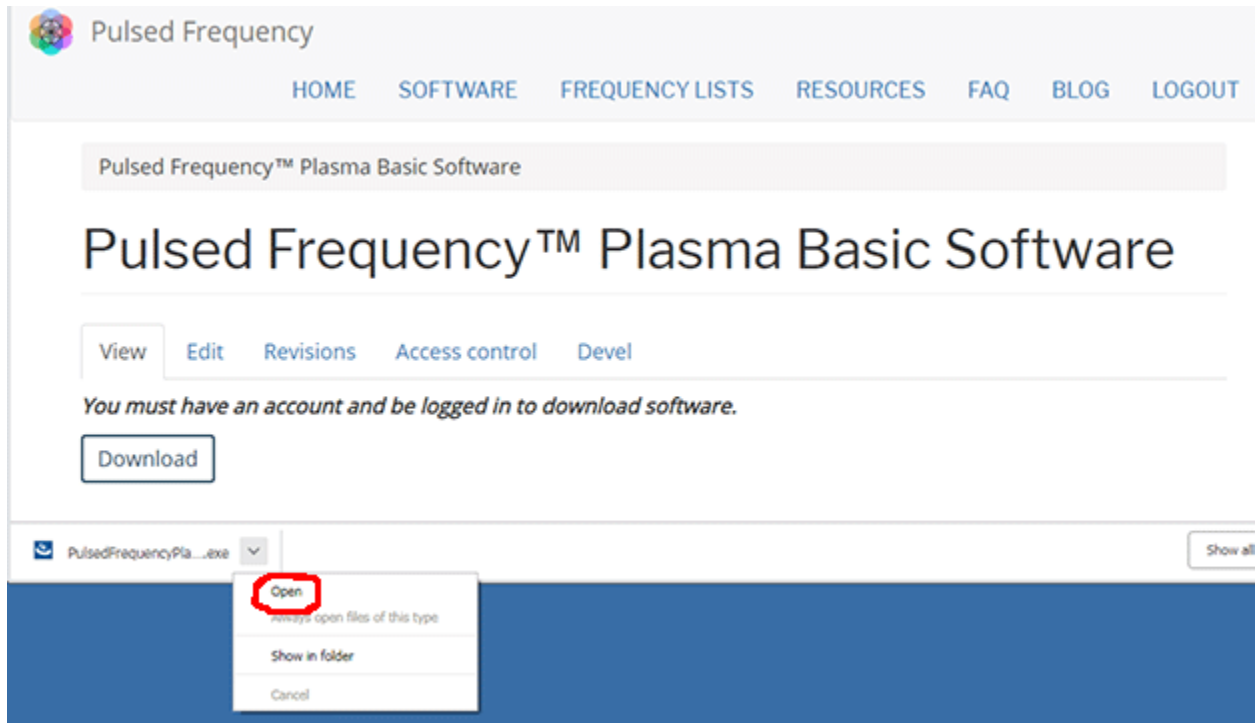
Click the **Download** button.

What happens next depends on the web browser you are using. Here are instructions specific to the three main browsers being used today.

Chrome



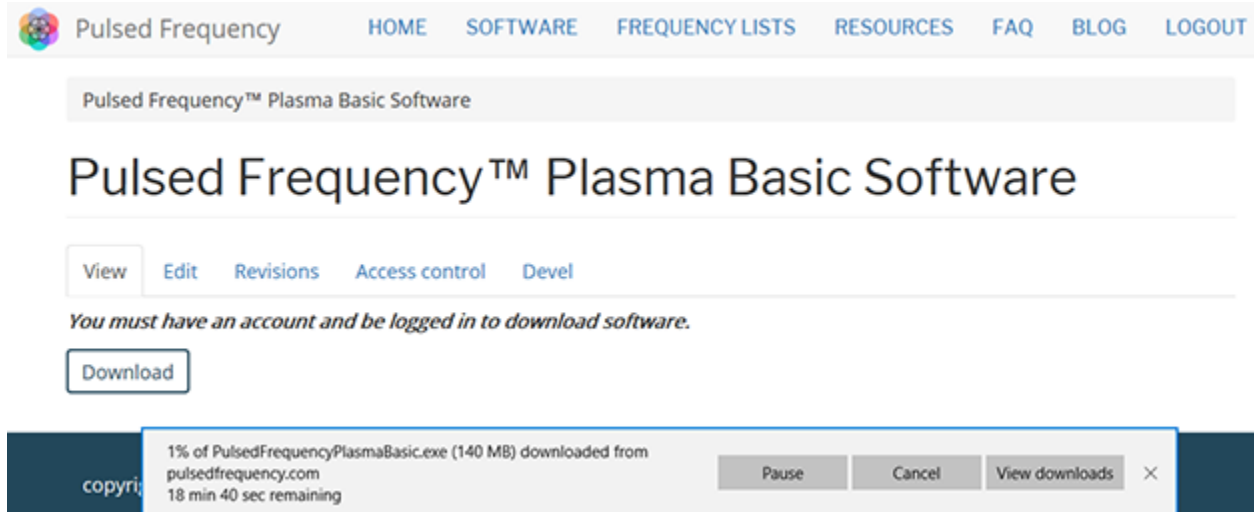
When you click the **Download** button, a notification displays in the lower left hand corner of the browser that alerts you to the file being downloaded. You will see the number of bytes that have been downloaded and the total size of the file.



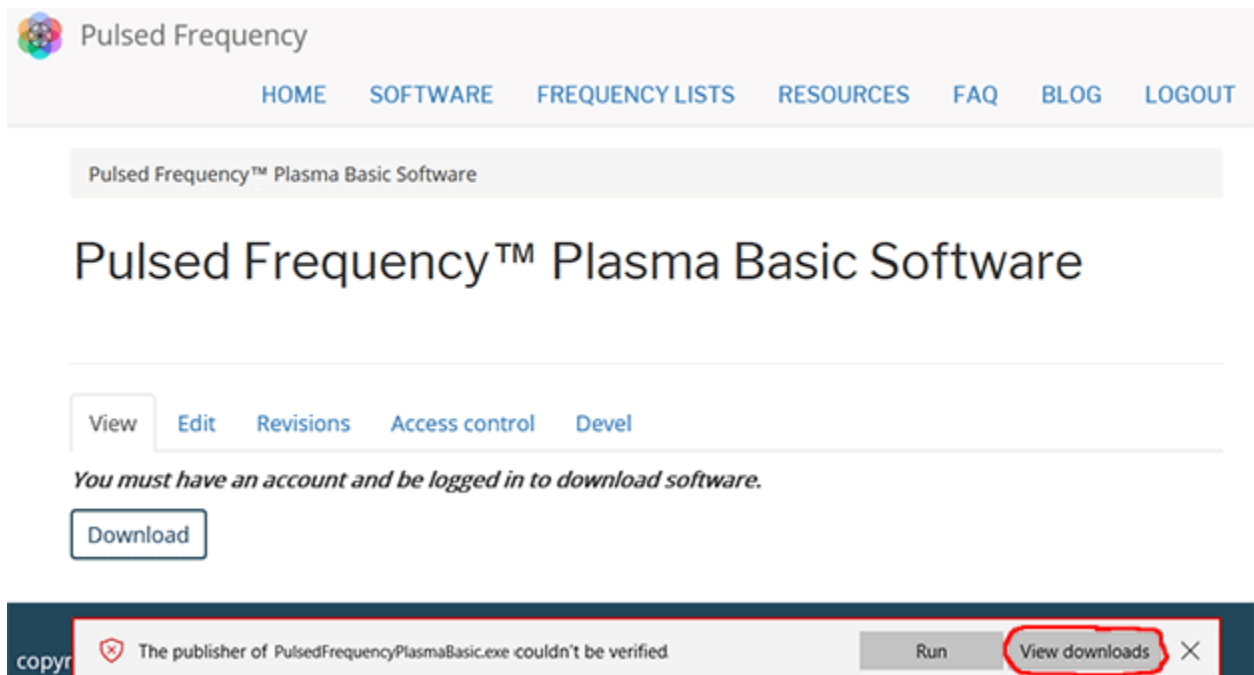
When the file download has completed, click the down arrow and then click **Open**. This will run the installation program for the **Plasma Basic** software.

Edge

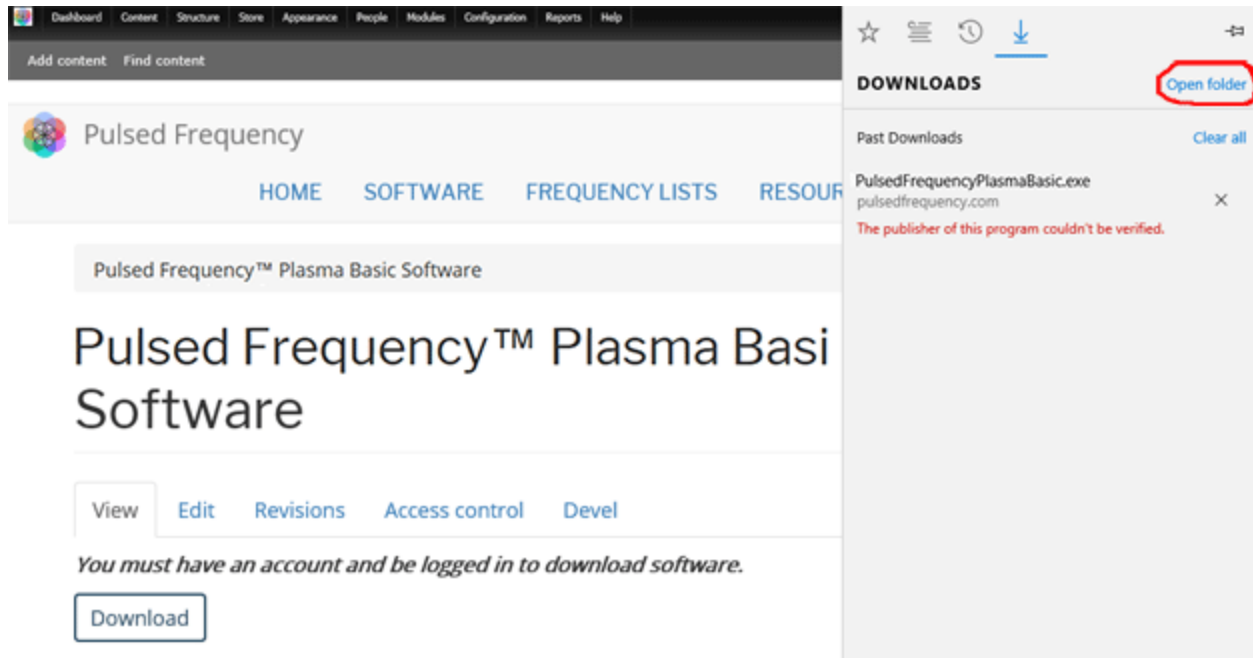
When you click the **Download** button, a small rectangular window will display at the bottom of the screen.



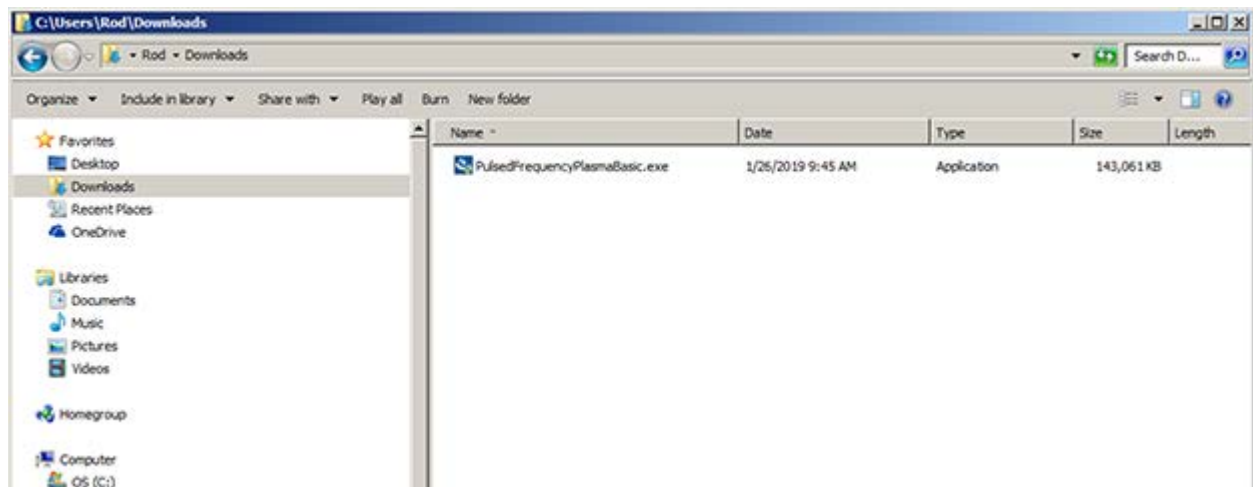
This window will show the progress of the file being downloaded.



When file download has completed, click the **View Downloads** button.



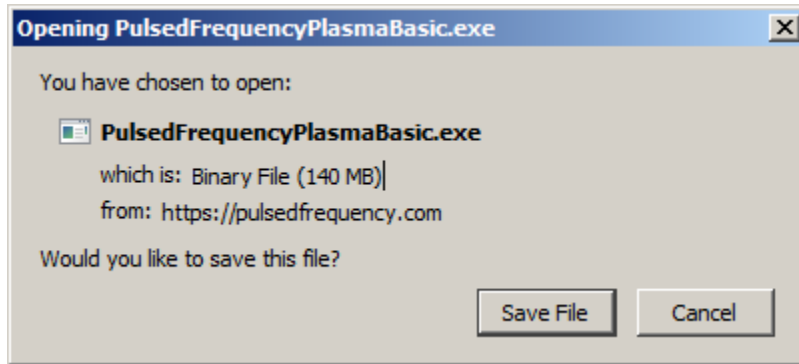
Next, in the upper right hand corner of the screen, click **Open Folder**.



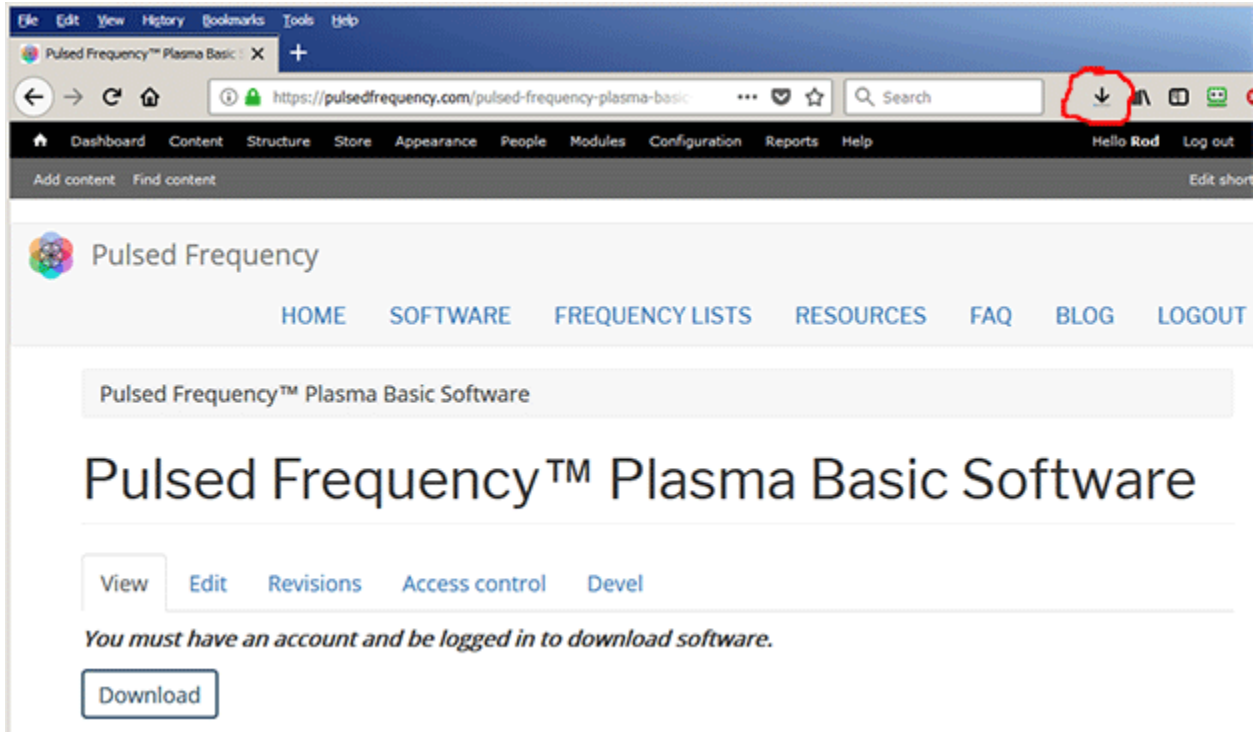
Finally, double-click **PulsedFrequencyPlasmaBasic.exe** to run the installation program for the **Plasma Basic** software.

Firefox

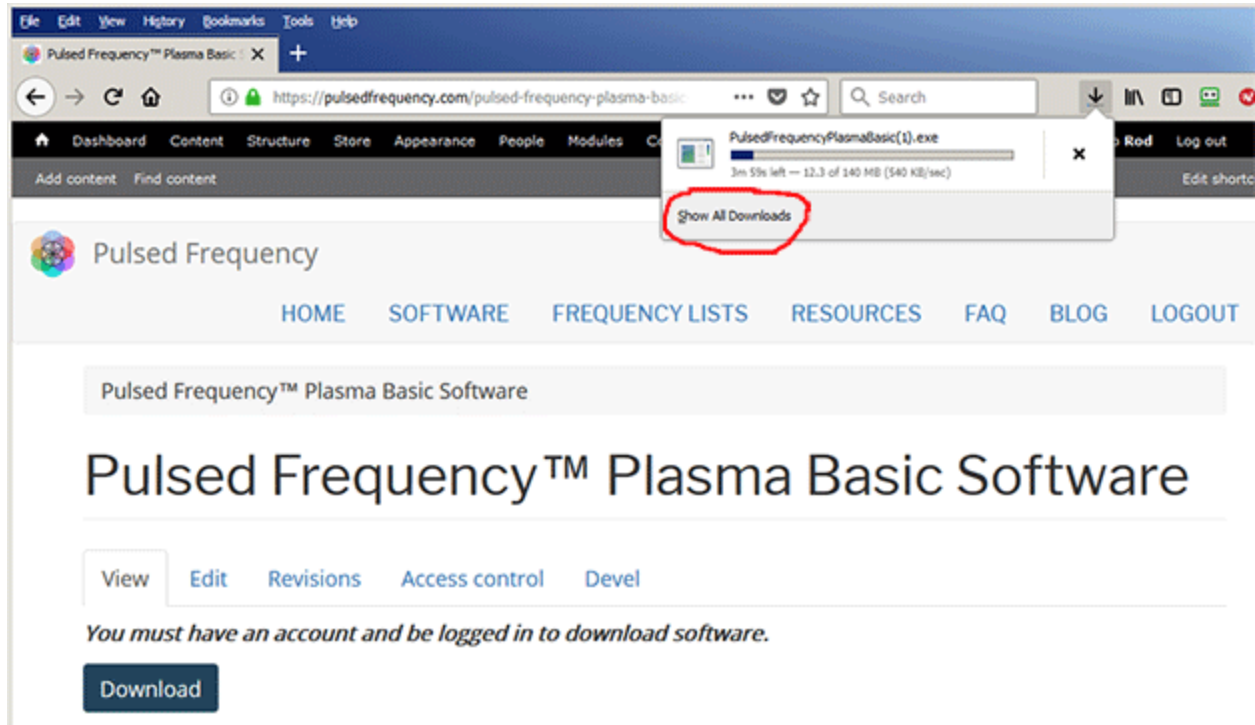
When you clicked the **Download** button, the following dialog box popped up.



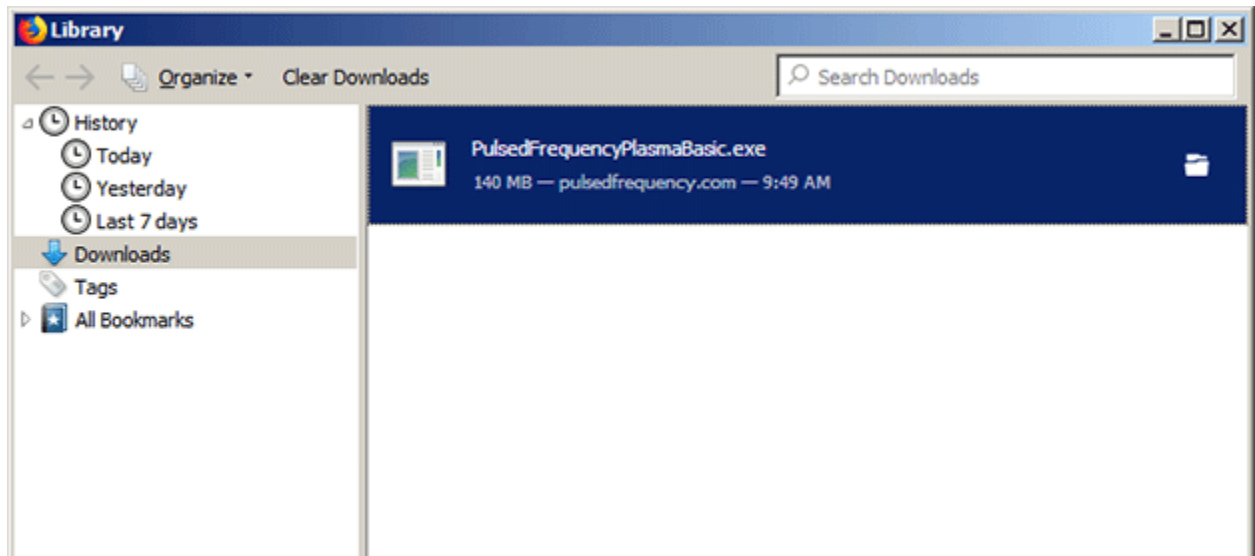
In this dialog box, click the **Save File** button.



Next, go to the upper right hand corner of the browser and click the **Down Arrow**.



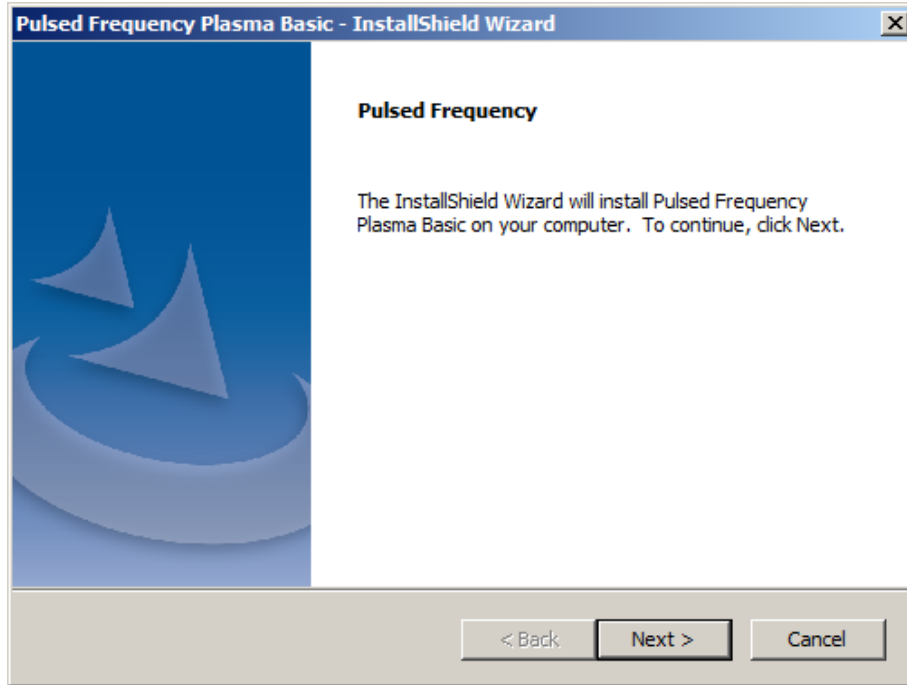
A small window will appear. Click the link in the lower left that says, **Show All Downloads**.



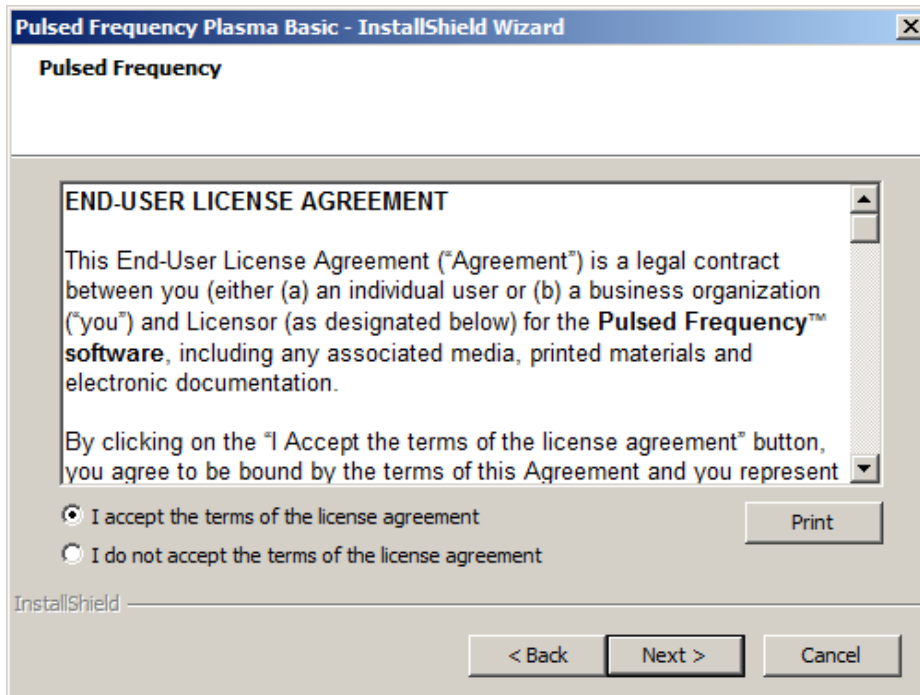
Next, the above window will pop up where you can watch the progress of the downloading file. When the file has downloaded, double-click on **PulsedFrequencyPlasmaBasic.exe** and the installation program will run.

Install the Software

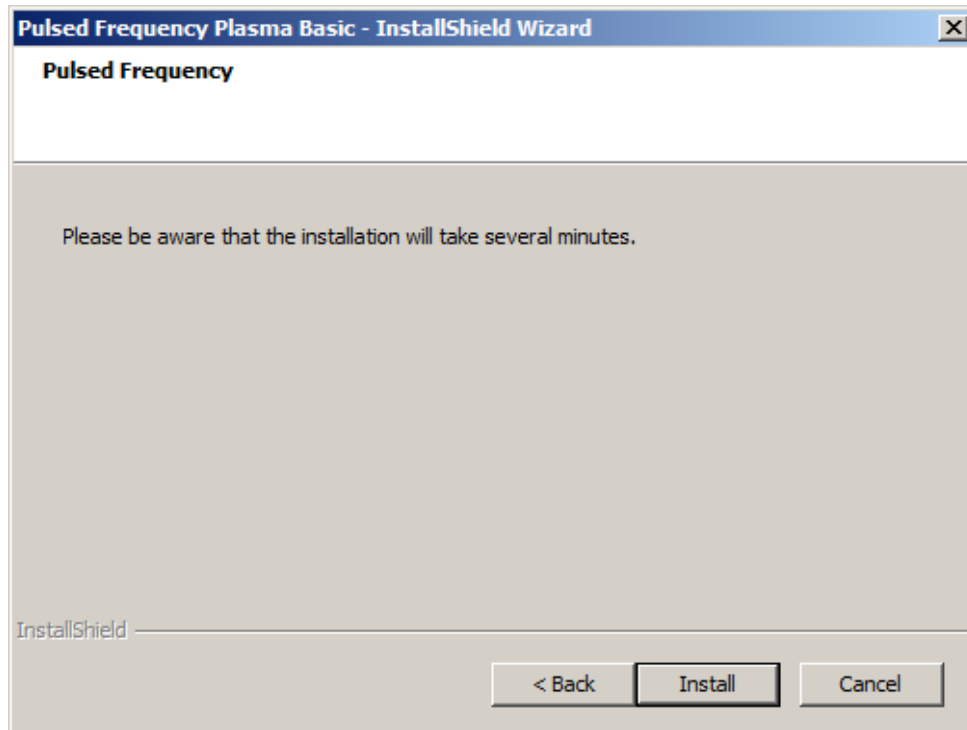
To install the Plasma Basic software, double-click on the downloaded file.



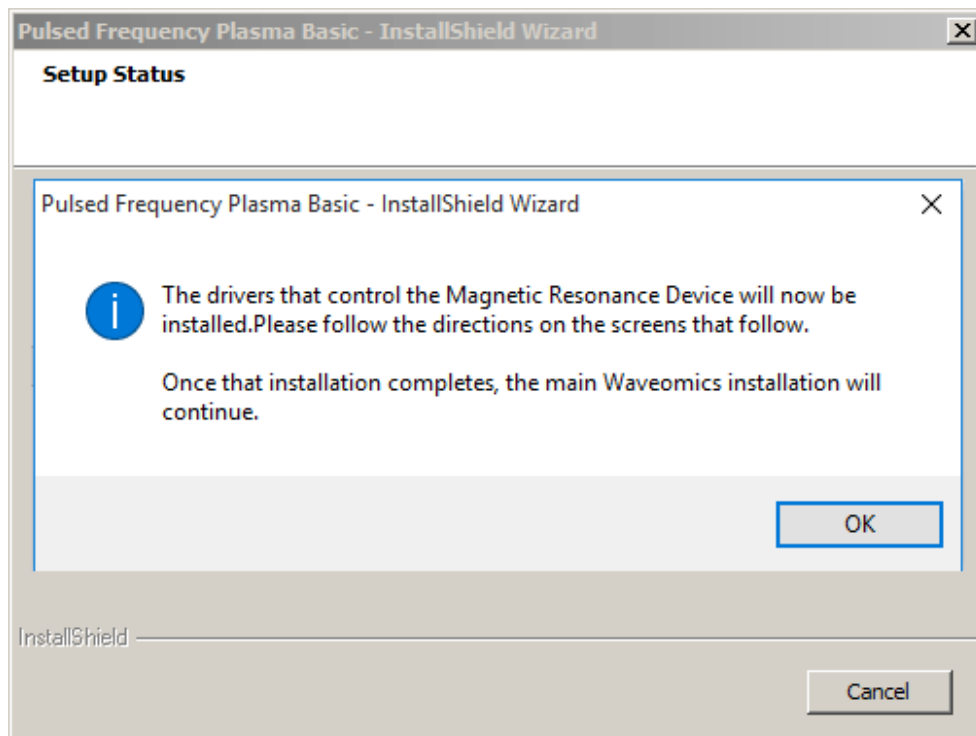
On this Welcome screen, click the **Next** button.



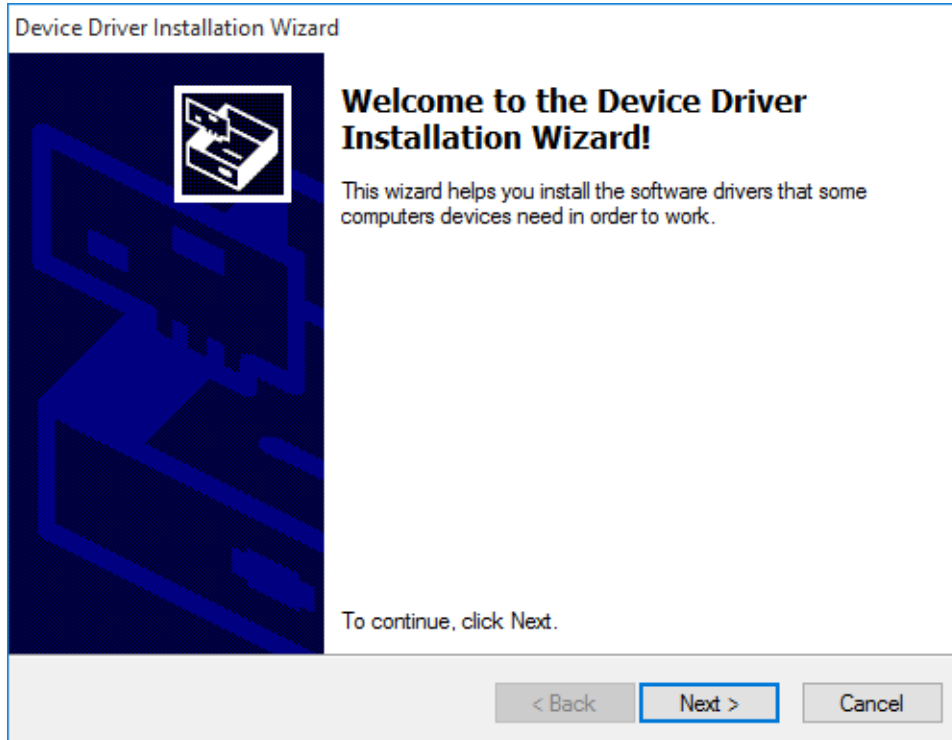
Click **I accept the terms of the license agreement**, then click the **Next** button.



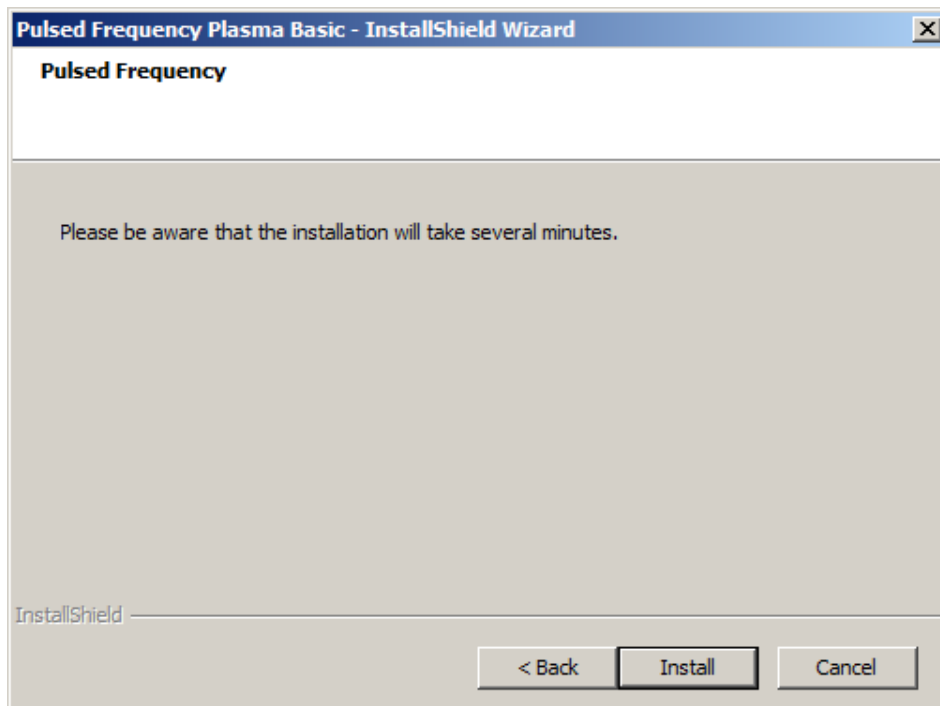
To begin the software installation, click the **Install** button.



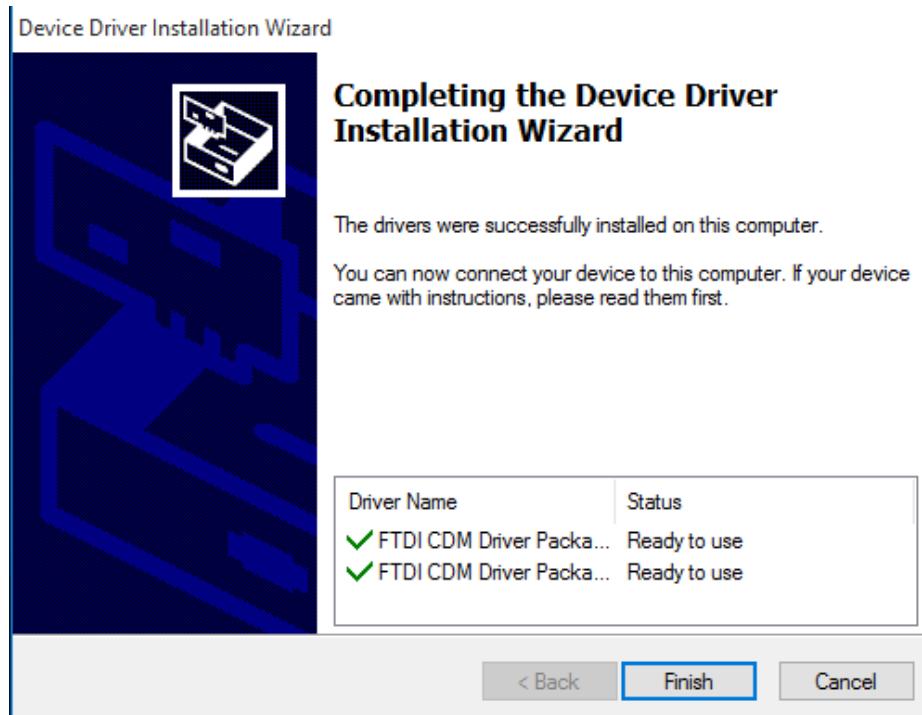
At this point, this dialog box will appear and inform you that the drivers needed for your PLASMA device will now be installed. Click the **OK** button to begin.



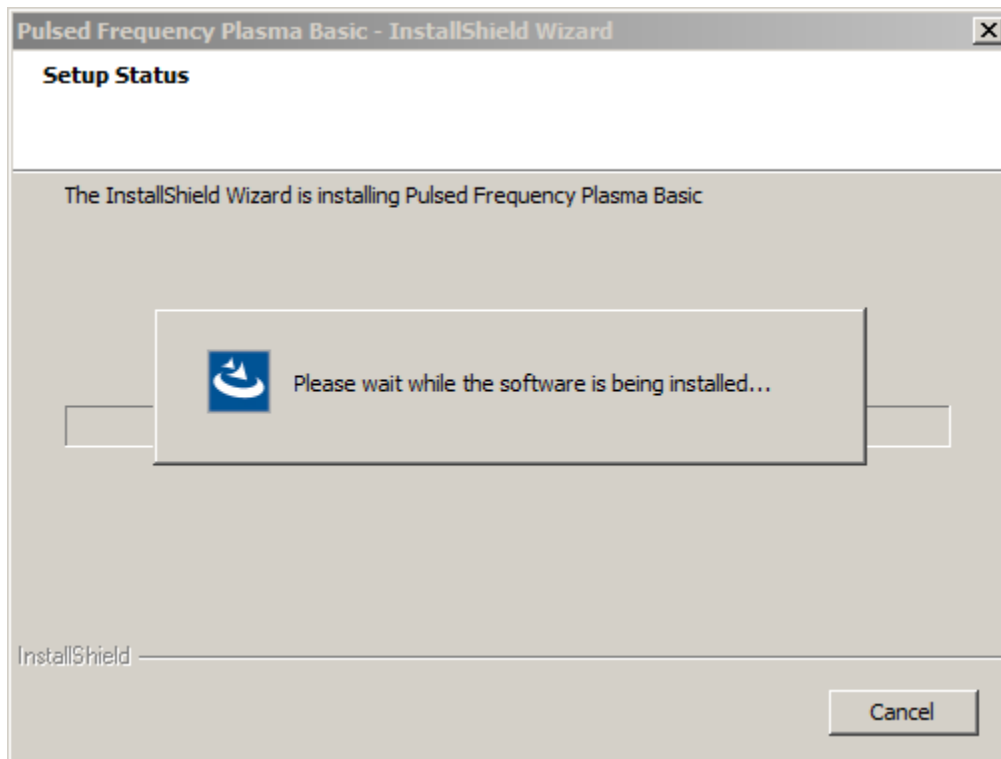
On this screen click the **Next** button.



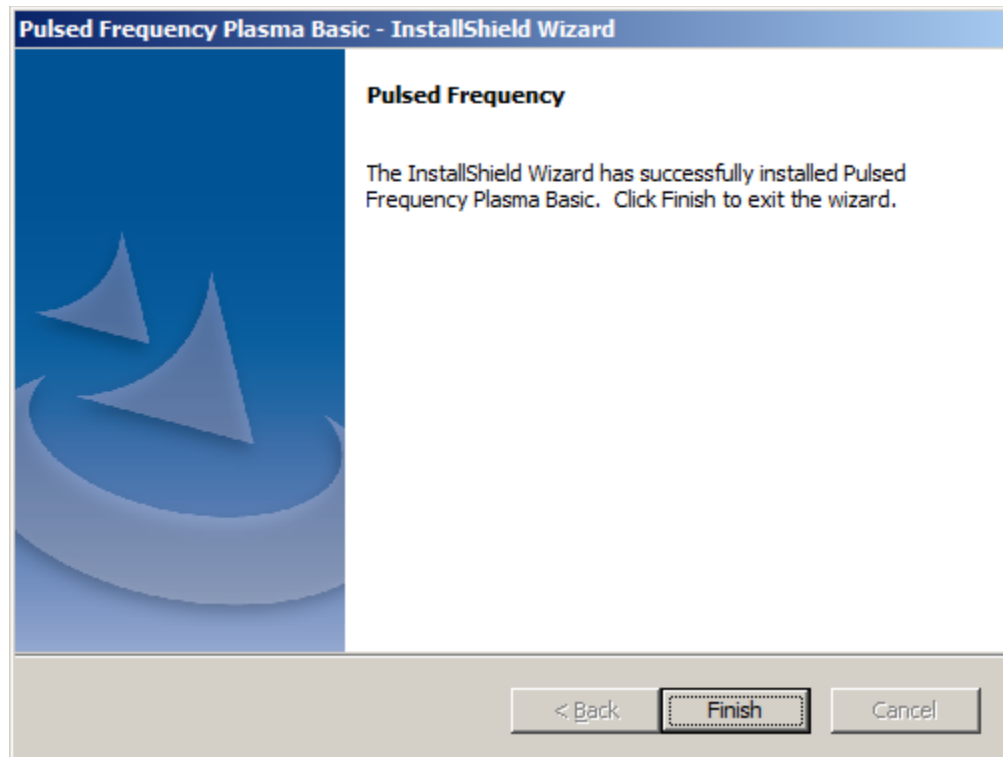
Accept the license agreement, then click the **Next** button.



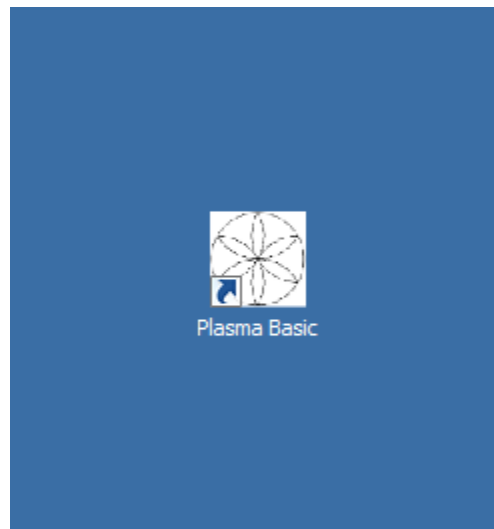
Click the **Finish** button to complete the driver installation.



At this point, the Plasma Basic software will be installed. Just wait until it has completed.



When you see this screen, the installation is complete. Click the **Finish** button.



During installation, a shortcut to the **Plasma Basics** software was placed on your desktop. Double-click this shortcut to run the software.

Connect PLAZOMICS to Your Computer

Please perform the following instructions in order to connect the PLAZOMICS device to your computer.



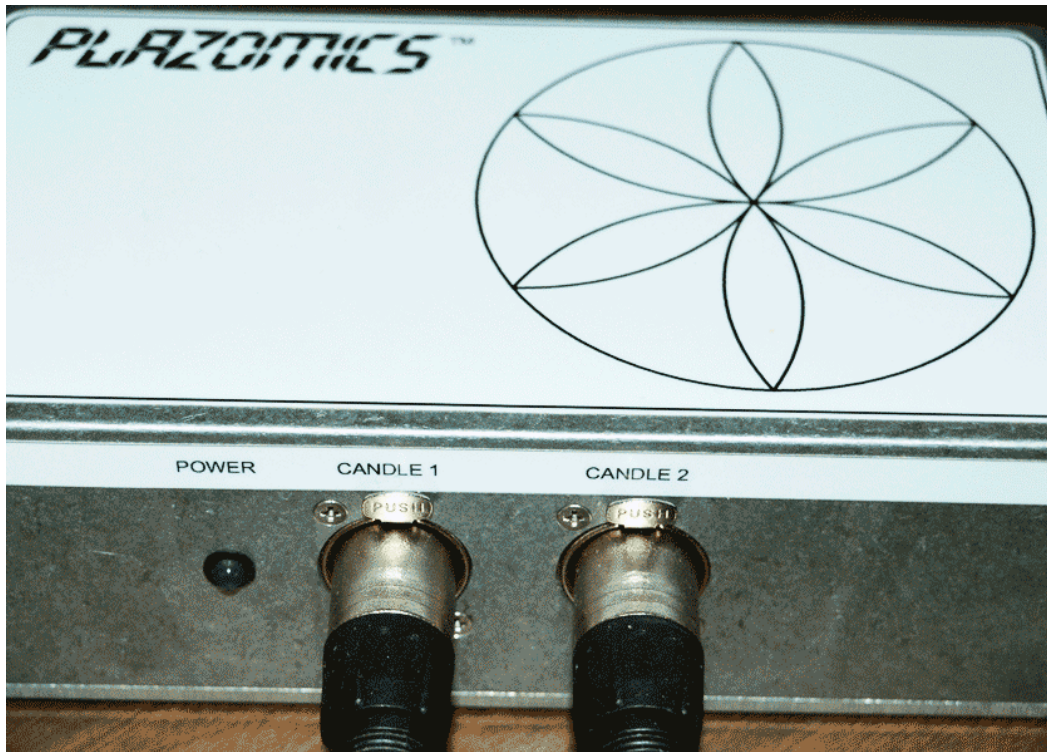
Pick up the small end of the supplied USB cable. Orient the end so that the side with the black dot is facing down.



Plug the small end of the cable into the OGG USB jack on the end of the PLAZOMICS unit. Place the switch into the LOAD position.



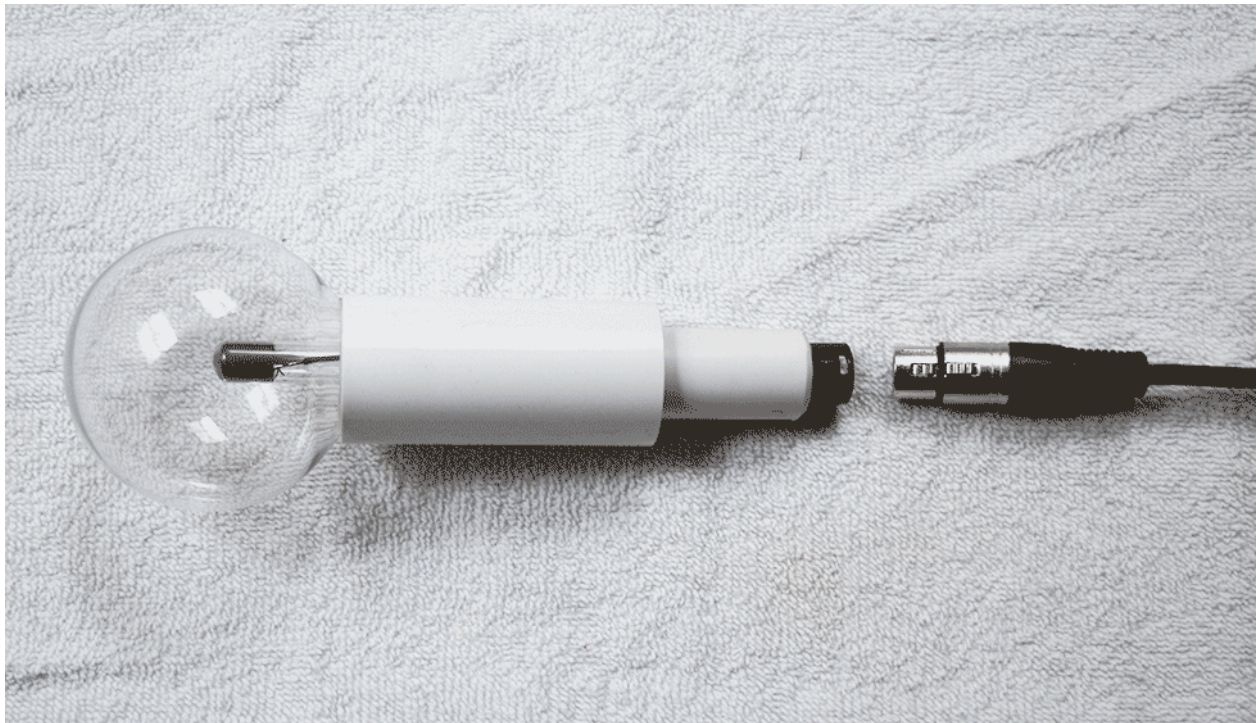
Plug the larger end of the supplied USB cable into a spare USB port on your computer.



Plug the male ends of the two audio cables into the side of the PLAZOMICS unit. Make sure to push each cable in all the way until you hear a click. If you do not hear a click, the cable is not plugged in all the way.



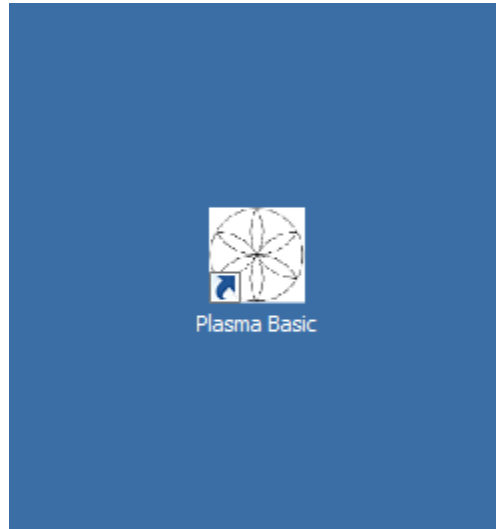
If you have the Plasma Candles, plug the female end of the audio cable into the bottom end of the candle. Push the plug all the way into the socket until you hear a click.



If you have the Plasma Globes, plug the female end of the audio cable into the bottom end of the globe. Push the plug all the way into the socket until you hear a click.

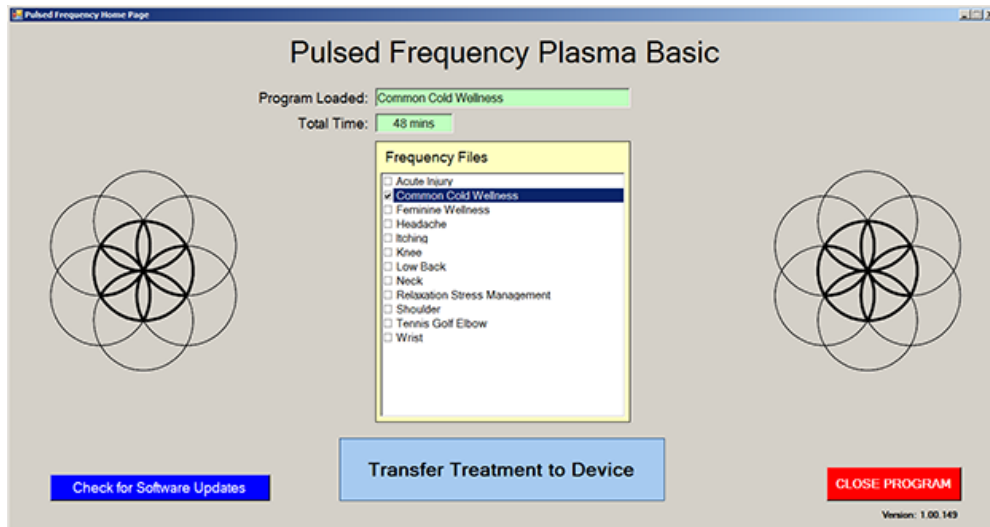
Place the power button on the PLAZOMICS unit in the OFF position. You are now ready to run the software.

To run the PlasmaBasic software, double-click the Plasma Basic shortcut on the desktop.



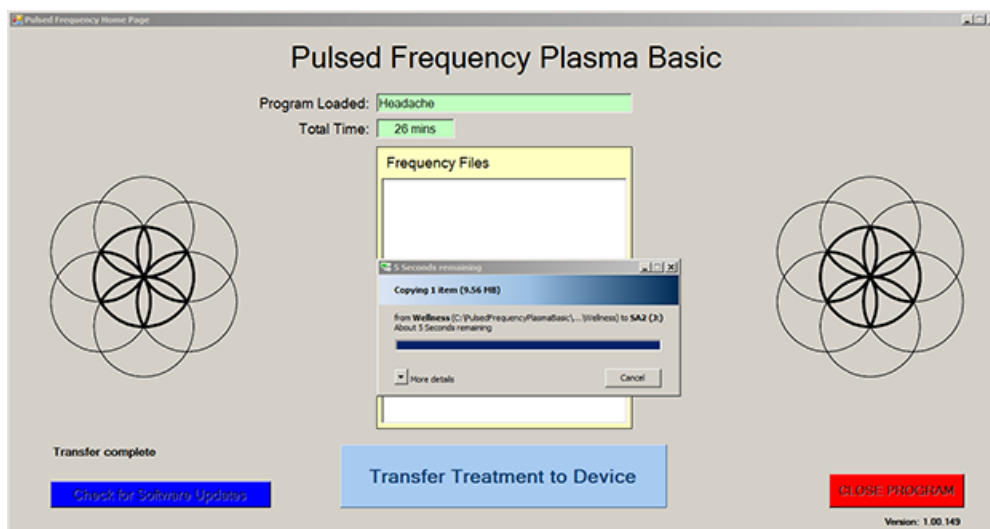
Load a Program into the PLAZOMICS

Before running the Plasma Basic software, make sure your PLAZOMICS unit is connected to the computer and the switch is in the Load position.



The Plasma Basic software is very easy to use. Select one of the available Wellness programs from the list. When you do this, the program name and amount of time it runs for will be displayed at the top.

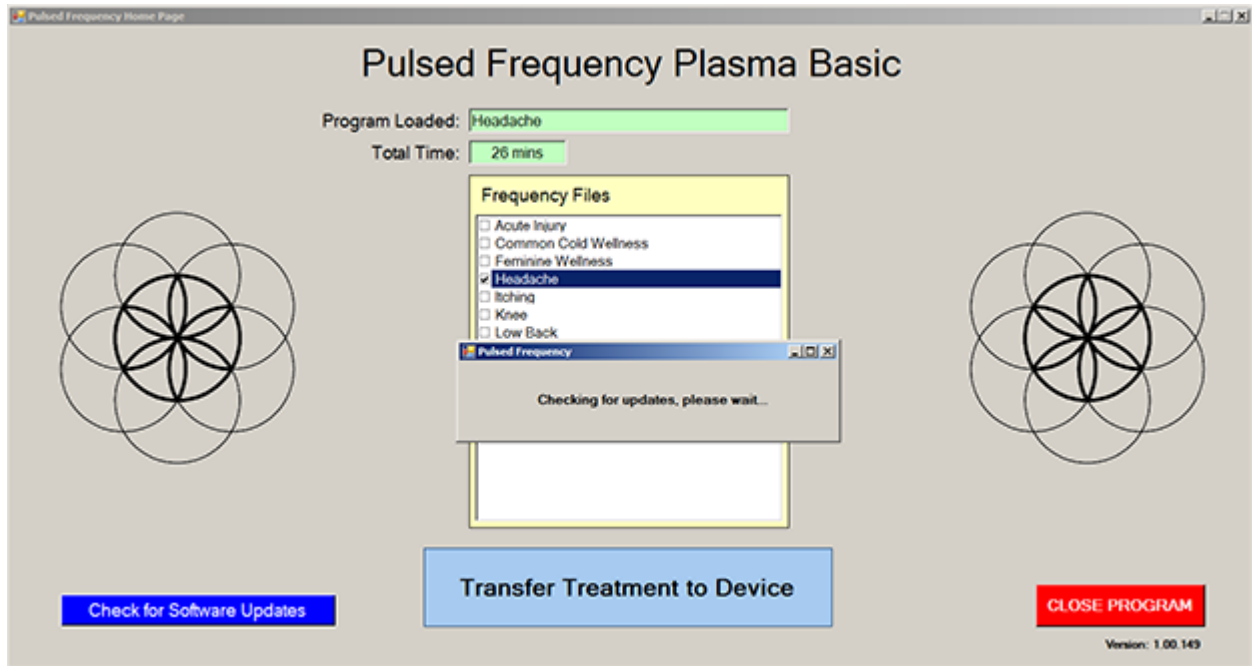
When you are ready, click the **Transfer Treatment to Device** button. The Wellness program will then be transferred to the PLAZOMICS device.



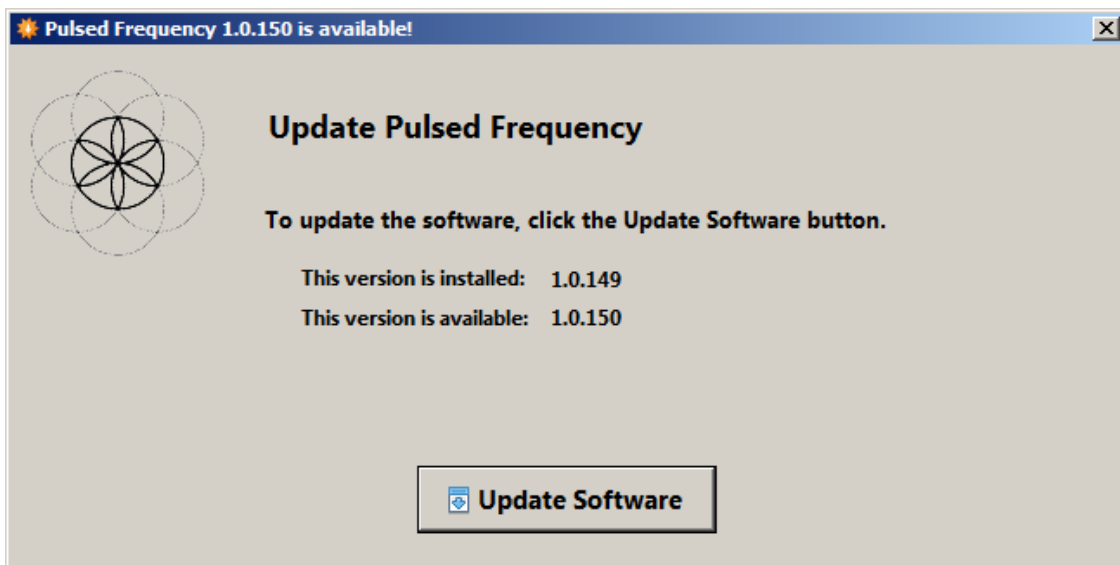
As the Wellness program is being transferred, you will see a progress bar in the middle of the screen that shows the progress of each file copied to the PLAZOMICS device. After this has completed, move the switch into the Run position and the PLAZOMICS device will be ready to use.

Check for Software Updates

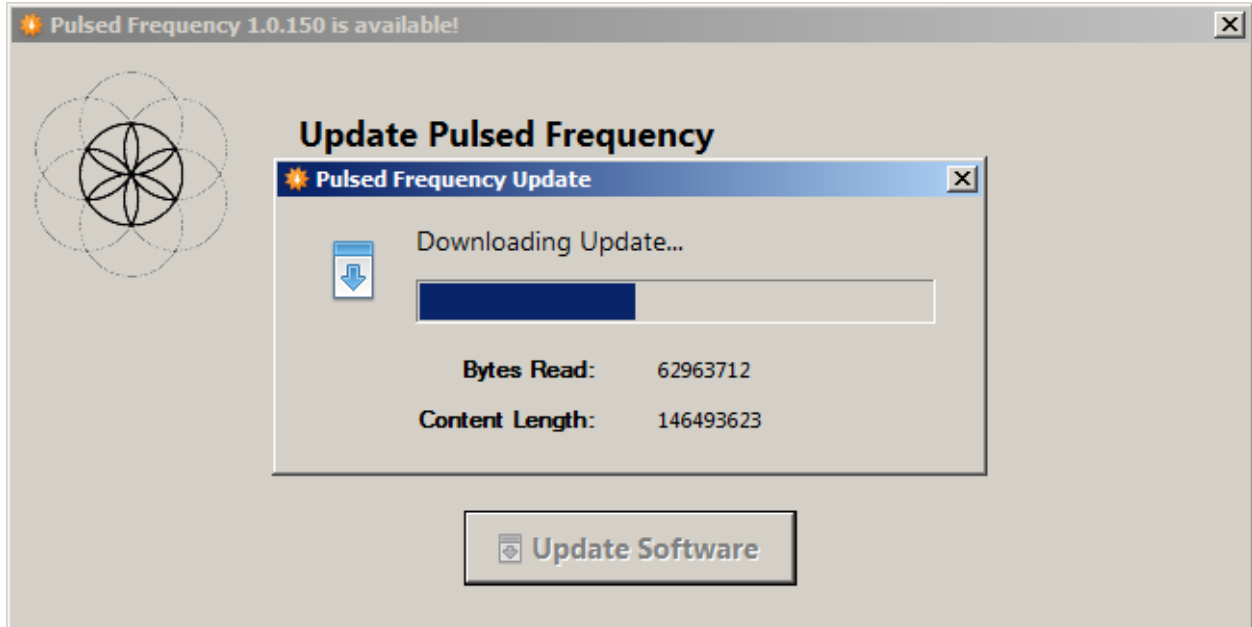
You should periodically check to see if software updates are available for your Plasma Basic software. To do this, click the Check for Software Updates button in the lower left hand corner of the screen.



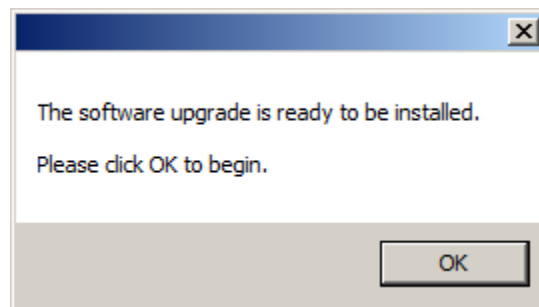
When you click the button, a small dialog box will be displayed telling you the software is checking the server for updates.



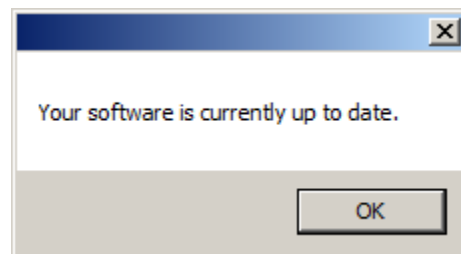
If a software update is available, you will see the above dialog box. Click the **Update Software** button to begin the downloading of the update.



As the software is being downloaded, a progress bar dialog will be displayed.



When the update has downloaded, the above dialog will be displayed. Click the OK button, the running software will exit and the installation program will run, allowing you to install the update.



Whenever you click the **Check for Software Updates** button and no update is available, the above dialog will be displayed. When this happens, just click the **OK** button to close the dialog box.

Troubleshooting

If you have problems detecting your PLAZOMICS (SA2) device, you will need to troubleshoot the problem. To do this, exit from the software and try the following solutions.

Solution 1

Even though you have the USB cable plugged into the PLAZOMICS device and to the computer, you may not have a good connection. Unplug the cable from both the PLAZOMICS and the computer, then plug the cable back into both places. Next, run the software, click **View Files in Plasma Device**, and see if the words, "SA2 is not connected" still appear on the screen. If they don't, your problem is solved. Otherwise, proceed to Solution 2.

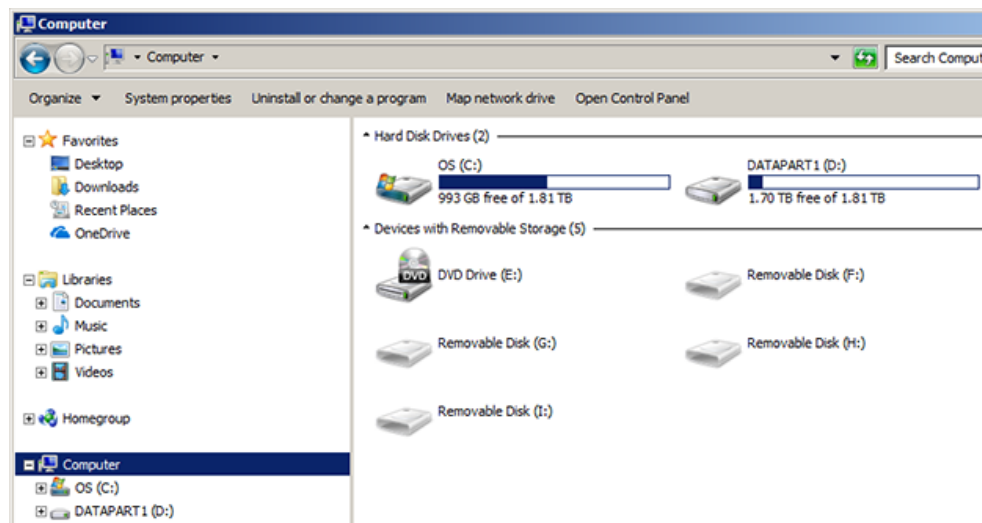
Solution 2

The most common cause of a connection problem is that Windows cannot see your device. Exit from the software and bring up a Windows Explorer/ My PC /My Computer window.

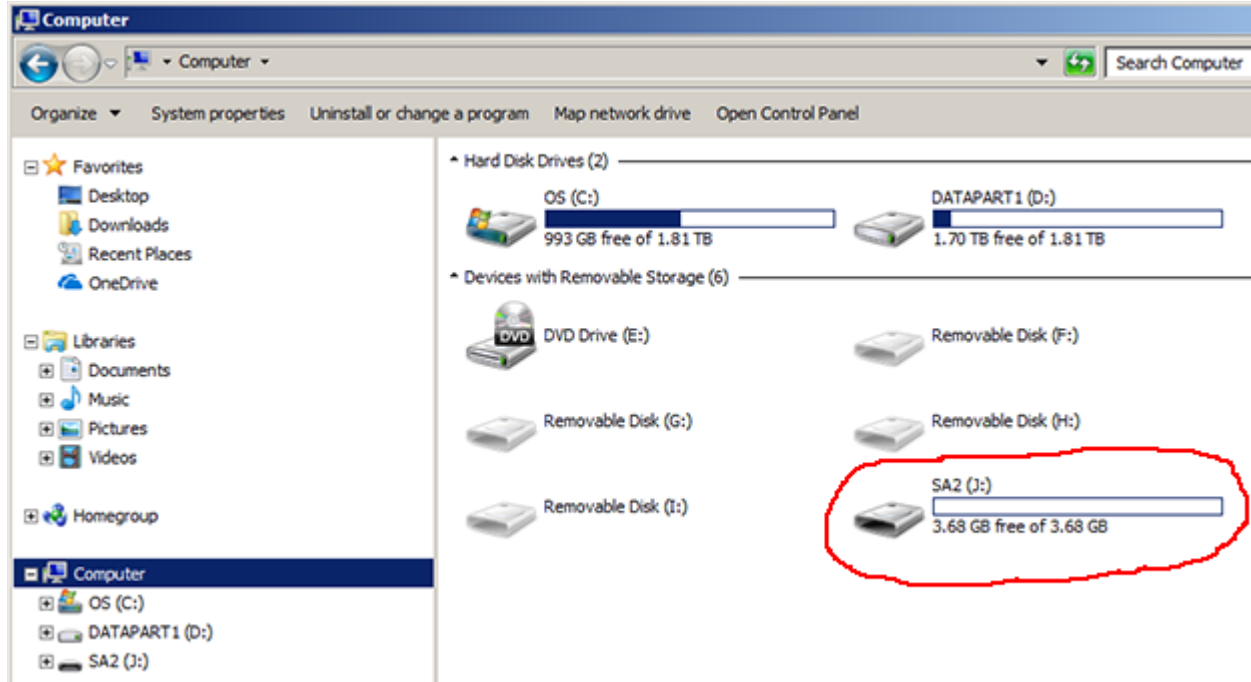
If you are using Windows 10, go to the taskbar at the bottom of the desktop, and click on File Explorer (the folder icon). Once the window is open, click **This PC** on the left hand side and look in the **Devices and drives** section on the right.

If you are using Windows 8 or 8.1, click the flag in the lower left hand corner and type "device manager." When that choice appears in the list, click on it.

If you are on Windows 7, click the Start button in the lower left hand corner, and enter "Windows Explorer" in the search box. When that choice appears in the list, click on it.



If Windows cannot see your PLAZOMICS device, you will see something similar to the screenshot above. Notice there is no drive labeled as **SA2**.



When you have a good connection to the PLAZOMICS unit, you will see something similar to the screenshot above. Notice there is a drive labeled as SA2. When you see that, it means that Windows can see your PLAZOMICS device.

If you don't see SA2 listed, try plugging the USB cable into a different USB port on your computer. Also, unplug the cable from your PLAZOMICS unit and plug it back in. Do this until a drive named SA2 appears. If you still don't see it, proceed to Solution 3.

Solution 3

If you are still having a problem, try plugging the larger end of the USB cable into a USB hub. The hub must be powered for this to work. A powered USB hub is where a power cable runs from the hub to an AC adapter that plugs into a wall outlet. With the PLAZOMICS plugged into the hub, run the software and try to load a treatment. If you can, your problem is solved.

Solution 4

Another cause of a connection problem is a bad USB cable. If you suspect your cable, then replace it and try again.

As a final note, be aware that all USB cables are not created equal. You will find that the smaller end on some cables will vary slightly in size, and this size differential can enable it to make better contact with the jack in the PLAZOMICS unit. Keep experimenting until you find a cable that works.

PLAZOMICS Manual Detection

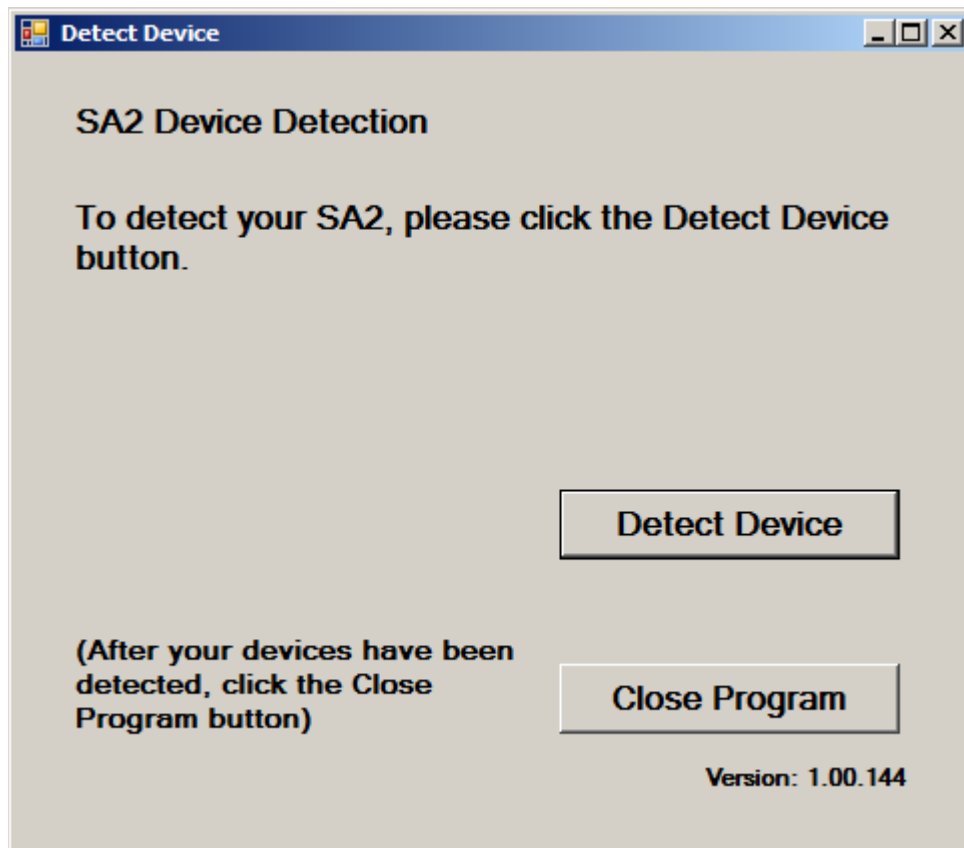
Please follow these steps in order to manually detect your PLAZOMICS (SA2) device.

On Windows 10, click the Windows flag in the lower left corner of the screen and scroll down the list of programs until you see the Pulsed Frequency folder. Expand that folder and select **Detect SA2**.

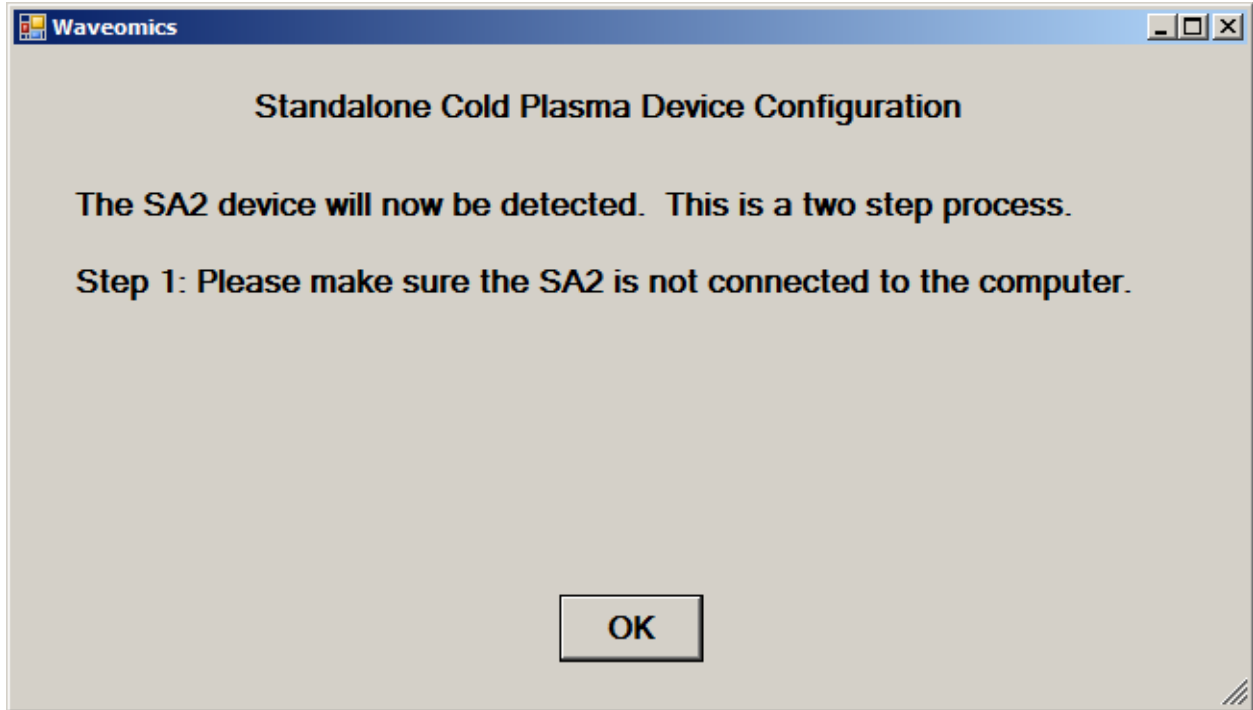
On Windows 8 or 8.1, click the Windows flag in the lower left corner of the screen, type "Detect SA2" and when that item is displayed in the list on the right, select it to run the utility.

On Windows 7, go to the Start Menu, click All Programs, scroll down to the Pulsed Frequency folder and select the **Detect SA2** program. Make sure your PLAZOMICS(SA2) device is not connected to the computer when you do this.

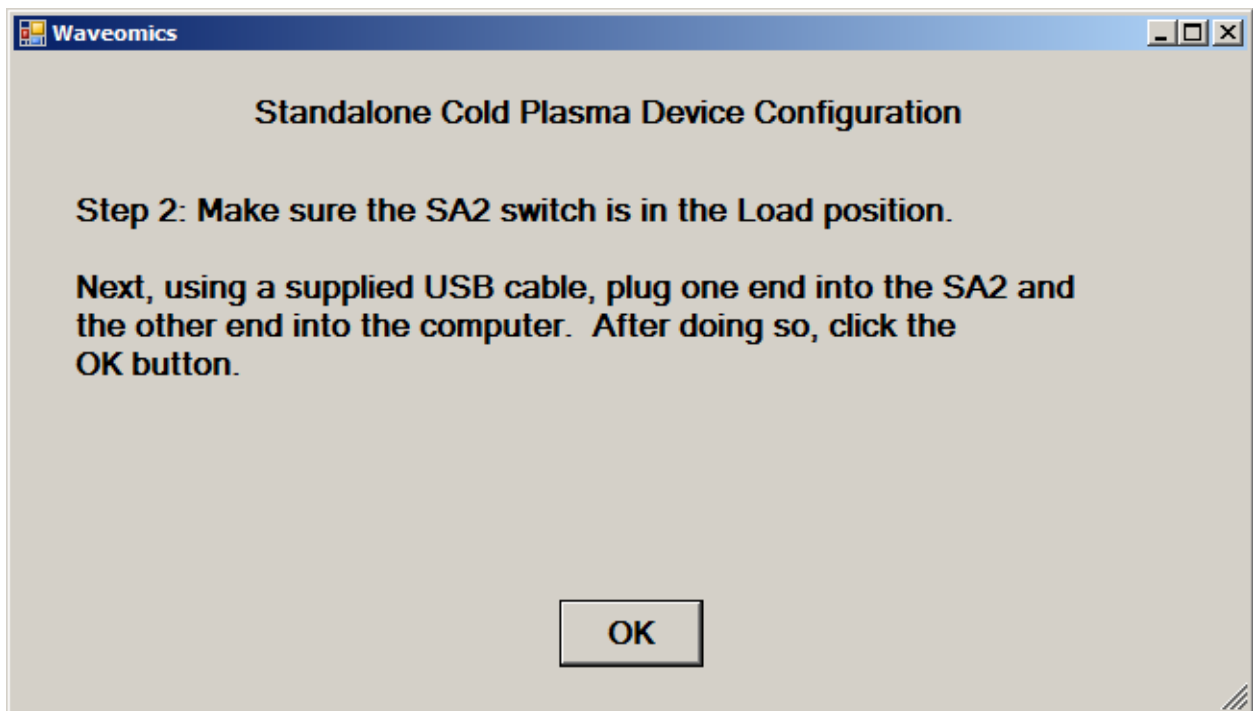
After you have clicked on the shortcut, you will get a warning from Windows saying "Do you want to allow this app from an unknown publisher to make changes to your device?" Click "Yes". Follow the instructions on the screen to detect your device.



On the first page of the program, click the Detect Device button. The following dialog box will then be displayed.

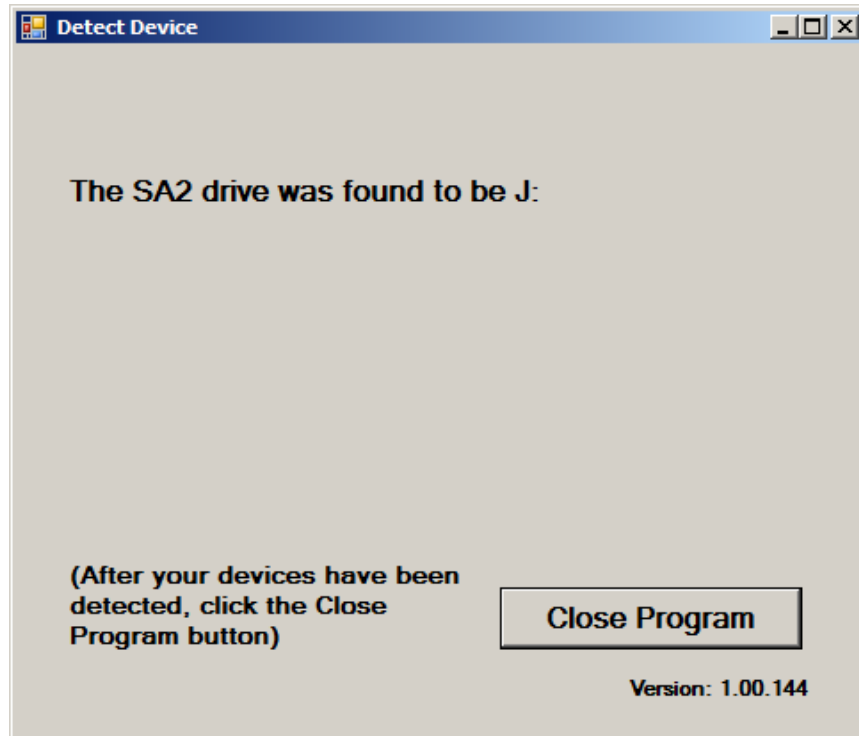


Make sure the PLAZOMICS is not connected to the computer, then click the **OK** button.

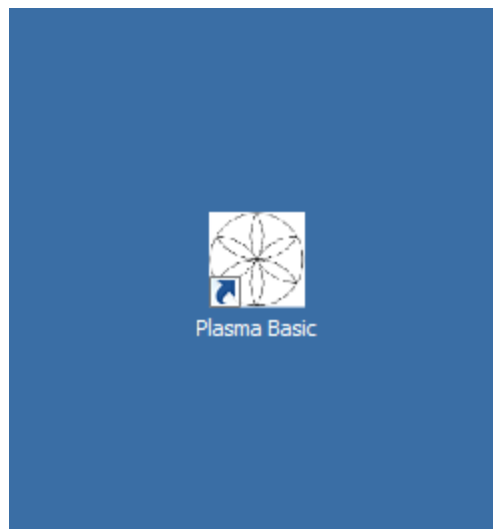


Next, connect the USB cable into the PLAZOMICS device and the other end into the computer. Move the switch into the Load position, then click the OK button.

When your device has been detected, you will be returned to the main screen of the program.



The location of the PLAZOMICS device will be displayed on this screen and its location will have been saved in the configuration information for the Pulsed Frequency Plasma Basic software. You can now click the **Close Program** button to exit the program. This completes the manual detection process.



The Plasma Basic software can now be run. Just go to the desktop and double-click on the Plasma Basic shortcut.